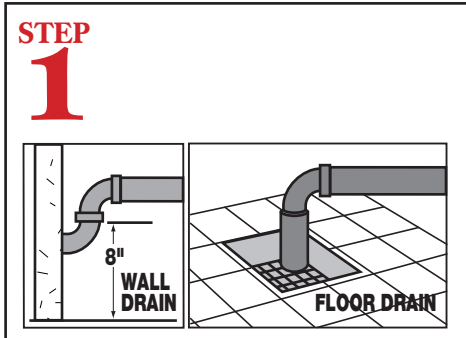


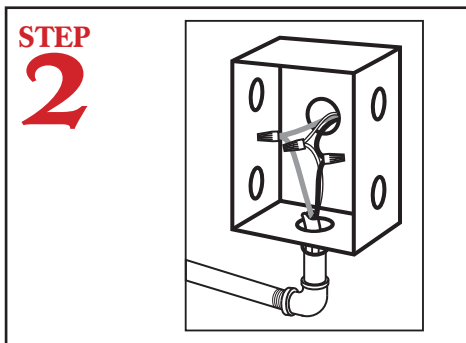
Models EAH, EC, EAH-T, EC-T

Quick Setup Instructions

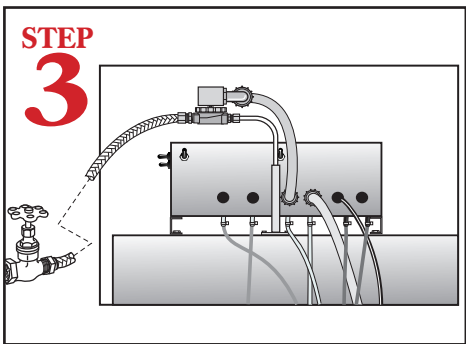
WARNING: Electrical and plumbing connections need to be made by a licensed service person and comply with all Federal, State and Local Health, Electrical, Plumbing and Safety codes.



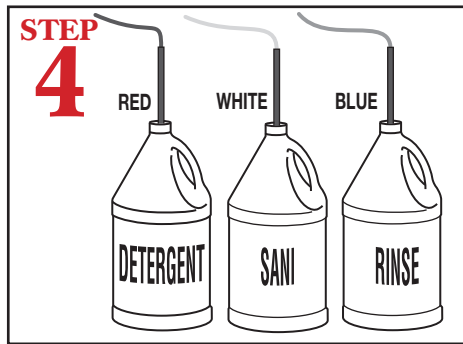
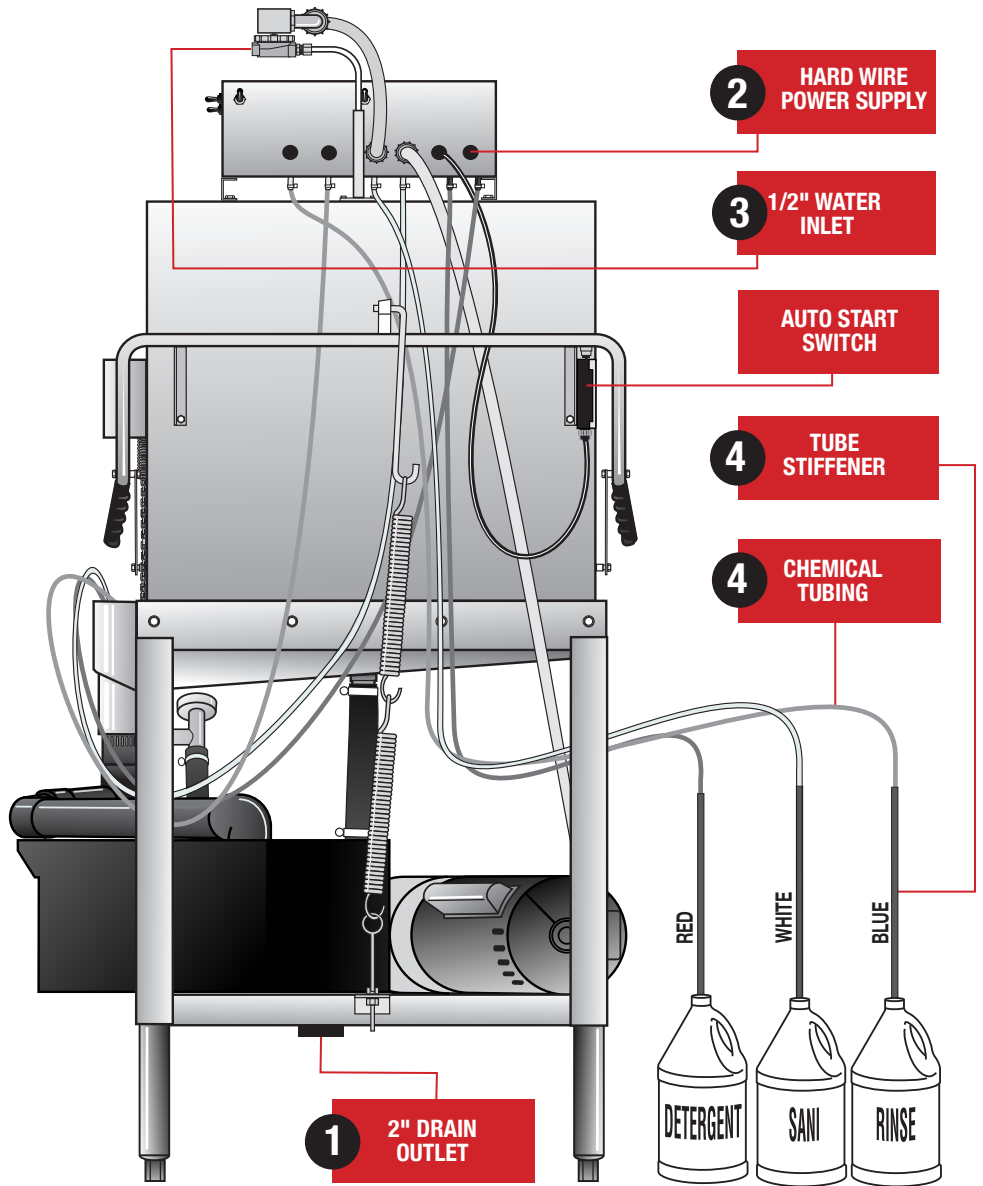
Connect a 2" drain pipe (not supplied) from scrap accumulator to floor or wall drain.



Connect hard wire power supply from dishmachine to power box.



Connect dishmachine to hot water source (minimum 120°-140° temperature required).



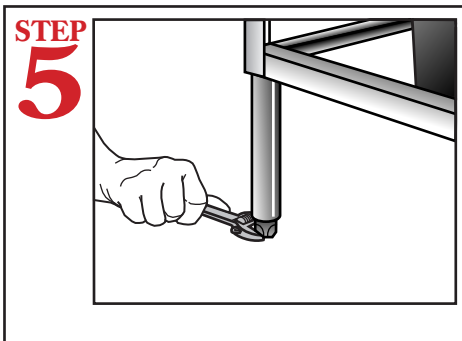
Insert tube stiffener with chemical tubing into each corresponding chemical dispensers.

Models EAH, EC, EAH-T, EC-T

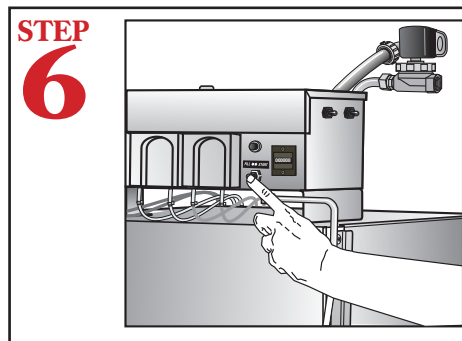
Quick Setup Instructions

MODEL "E" FRONT VIEW

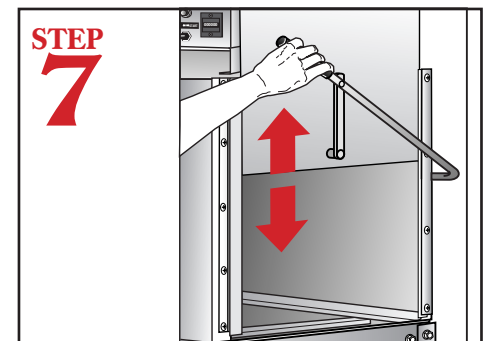
WARNING: Electrical and plumbing connections need to be made by a licensed service person and comply with all Federal, State and Local Health, Electrical, Plumbing and Safety codes.



STEP 5
Level dishmachine by adjusting leveling legs. Dishmachine must be level front and back to ensure proper performance.



STEP 6
Press the "FILL/START" switch. Hold in the "FILL" position until the water overflows into the scrap accumulator.



STEP 7
Open dishmachine doors completely. Closing the doors will automatically activate the machine.