



WATER CREATION

TUB FAUCET INSTALLATION GUIDE

BEFORE YOU BEGIN

- 1) Shut off water supply.
- 2) Carefully inspect waste and supply tubing for signs of damage.
- 3) Replace waste or supply tubing if necessary

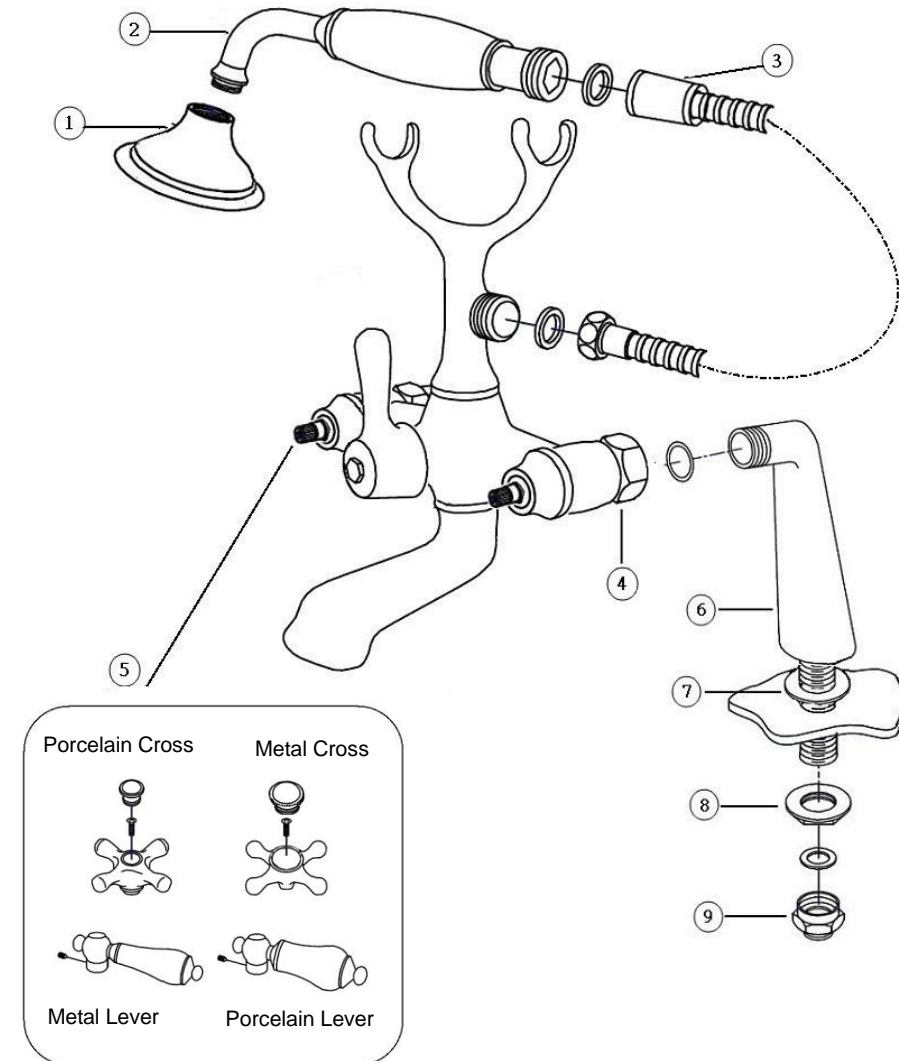
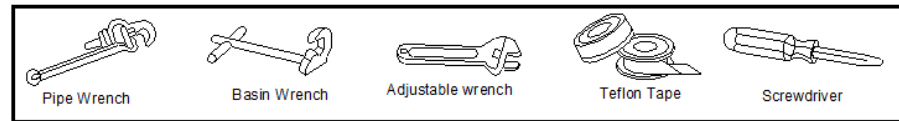
INSTRUCTIONS

- 1) Attach the rubber washer into faucet body nut (4), connect it with risers (6).
- 2) Slid the rubber washers (7) onto each riser shank. To set the faucet onto tub and shanks go through the tub wall holes.
- 3) Install the lock nut (8) then tighten with wrench.
- 4) Set the handles (5) on faucet body with screws.
- 5) Assemble the hand shower (1) (2) and hose (3) with rubber washer, then to connect with cradle
- 6) If necessary, to assemble the 3/4" to 1/2" adapter (9) with rubber washer.
- 7) Connect the water supply lines to riser shank/adapter.
- 8) Turn on main water supply and check all connections for leaking.

COMPLETE INSTALLATION

Note: All nuts connections, hand tighten first then quarter turn tighten by wrench. Don't over tighten the nut.

TOOLS AND MATERIALS



Porcelain Cross

Metal Cross

Metal Lever

Porcelain Lever