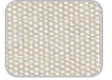


FABRIC COLOR



ARCTIC WHITE



WHITE SAND



BUTTERCUP



BITTER ORANGE



TERRACOTTA



TAUPE



MIDNIGHT BLUE



OLIVE GREEN



BLACK WIDOW



SLATE GREY



CHARCOAL



RED

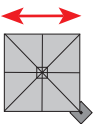


CHARCOAL TWEED
(available from Jan 2017)



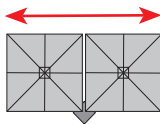
SIZE & CONFIGURATION

2.5m / 8'2"
3.0m / 9'10"



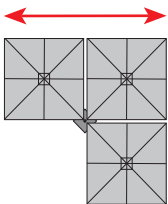
SQUARE UNO

5.15m / 16'11"
6.15m / 20'2"



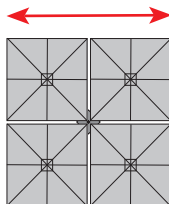
SQUARE DUO

5.15m / 16'11"
6.15m / 20'2"



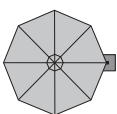
SQUARE TRIO

5.15m / 16'11"
6.15m / 20'2"



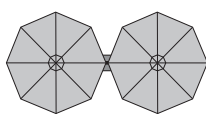
SQUARE QUATTRO

3.5m / 11'6"
4.2m / 13'10"



OCTAGON UNO

7.0m / 23'
8.4m / 28'8"



OCTAGON DUO

- Marine grade, powder coated aluminium, stainless steel and other non-corrosive materials
- Brilliant international award winning design
- Mount up to four umbrellas off just one pole
- Up & down in 'one easy sliding movement'
- Effortless gas strut assisted deployment
- Durable, heavy-duty aluminium mast
- Premium 100% solution dyed Acrylic Canvas fabric canopy (UPF 50+)

FIXING OPTIONS



In-ground Anchor



Portable Base



Surface Plate



Wall Fixing

WARRANTY*

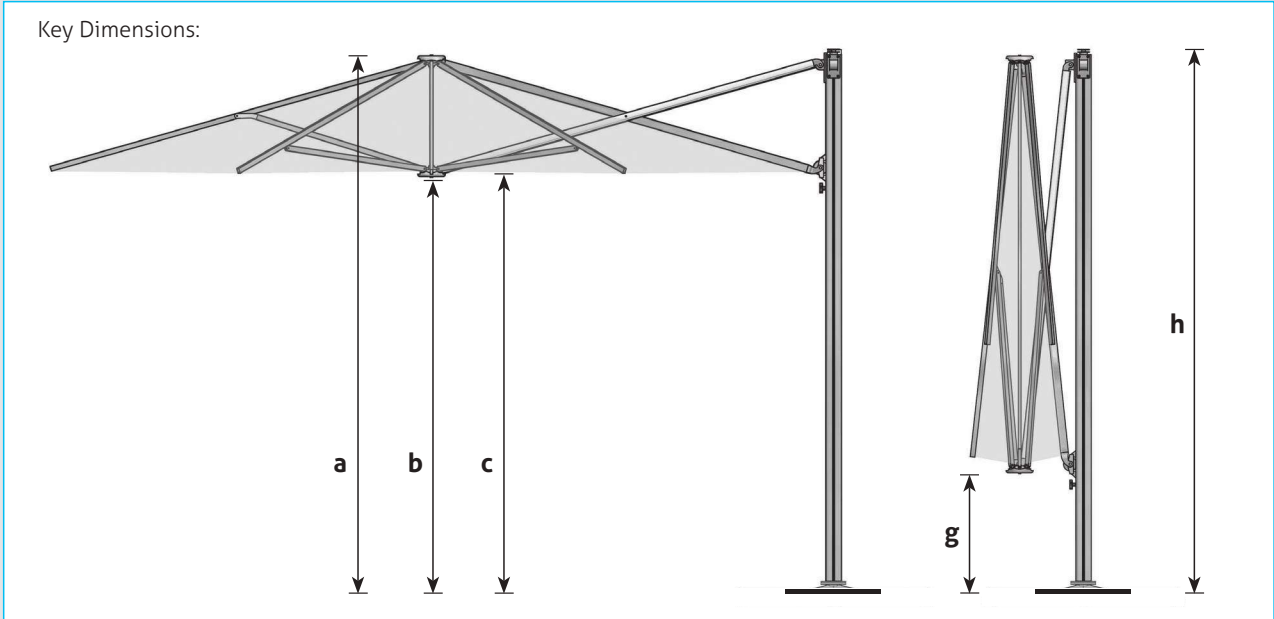
5 year
FRAME &
CANOPY
warranty

*Conditions Apply

TRUSTED
FOR OVER
21 YEARS

MAST





	2.5m/8'2" Square	3.0m/9'10" Square	3.5m/11'6" Octagon	4.2m/13'10" Octagon
Dimensions of open umbrella				
a: Total height to top of canopy *	+/- 114"	+/- 114"	+/- 114"	+/- 114"
b: Distance from ground to central frame hub *	+/- 89"	+/- 88"	+/- 89"	+/- 88"
c: Height to lower outer edge of canopy *	+/- 91"	+/- 90"	+/- 91"	+/- 90"
d: Distance from centre of mast to outside edge of canopy **	+/- 101"	+/- 121"	+/- 143"	+/- 172"
e: Diagonal distance from centre of mast to opposite / furthest corner of umbrella (diameter) *	+/- 143"	+/- 172"	+/- 143"	+/- 172"
Dimensions of closed umbrella				
f: Distance from ground to central frame hub *	+/- 36"	+/- 22"	+/- 36"	+/- 22"
g: Overall height of umbrella to top of mast cap *	+/- 114"	+/- 114"	+/- 114"	+/- 114"

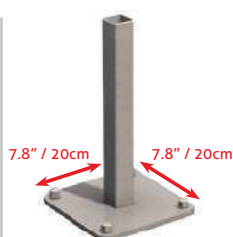
* For the portable base, add 4.7" to measurement. (Note: optional portable base wheels also add additional height over and above the normal portable base height).

** Refer plan diagrams in table.

INSTALLATION OPTIONS:



IN-GROUND ANCHOR



SURFACE PLATE



*Only available in main centres.
Inquire about availability in your region.



PORTABLE BASE

Note: Requires concrete pavers (not supplied) for anchoring weight

Approximate weight with:
- 8 pavers 130kg/1286lb
- 12 pavers 185 kg/408lb



WALL MOUNTING BRACKET
(x2 per umbrella)