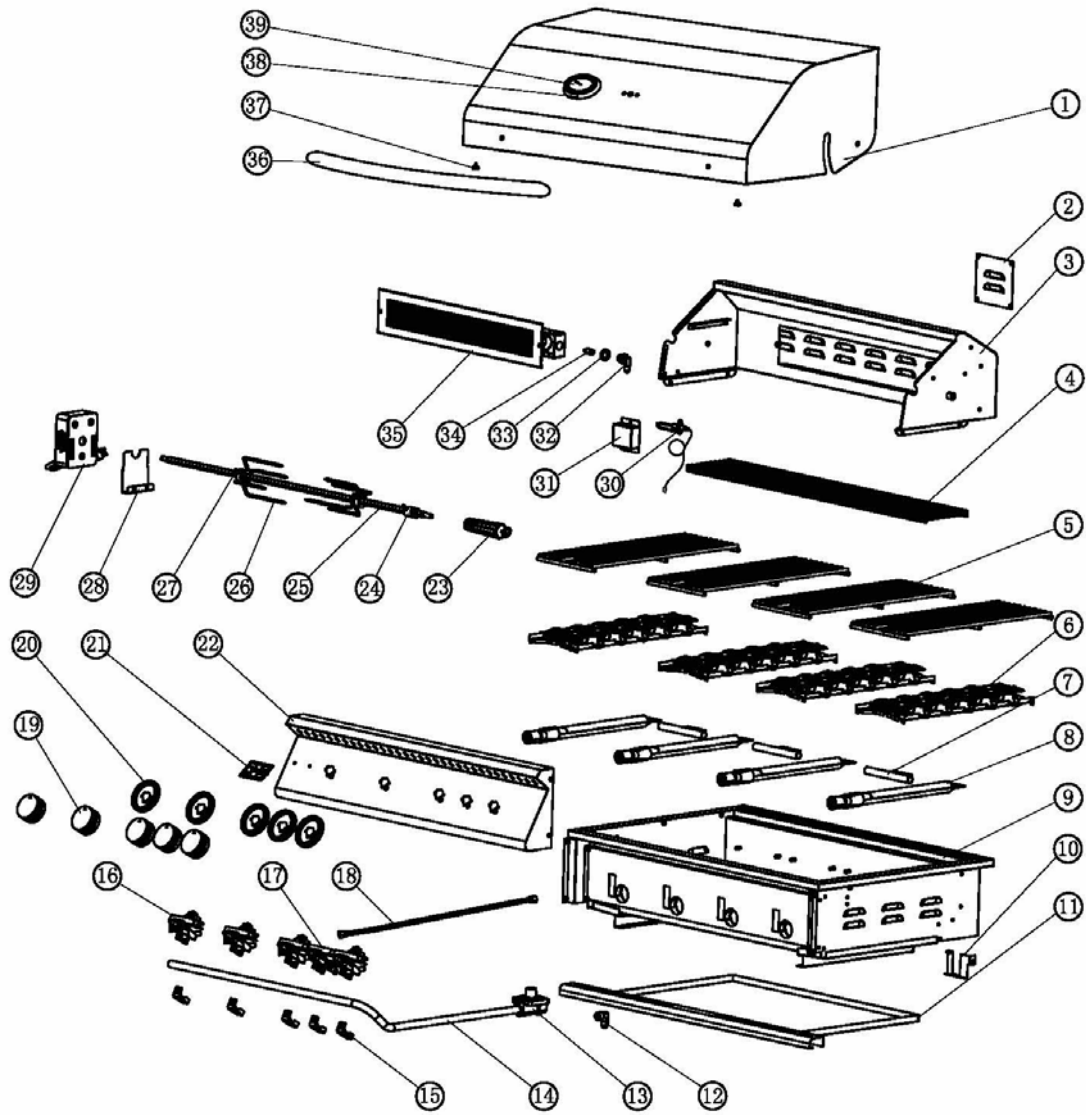


RJC26a/ RJC32a Enlarged View



RJC26a/RJC32a Enlarged View

ITEM	PART NO.	DESCRIPTION	QTY.	
			RJC26a	RJC32a
1	RJC001P	26°-TOP HOOD	1	
	RJC002P	32°-TOP HOOD		1
2	RJC003P	ACCESS DOOR		1
3	RJC004P	26°-REAR HOOD	1	
	RJC005P	32°-REAR HOOD		1
4	RJC006P	26°-WARMING RACK	1	
	RJC007P	32°-WARMING RACK		1
5	RJC008P	TOP GRATE	3	4
6	RJC009P	BRIQUETTE TRAY	3	4
7	RJC010P	FLASH TUBE	2	3
8	RJC011P	BURNER	3	4
9	RJC012P	26°-BASIN	1	
	RJC013P	32°-BASIN		1
10	RJC014P	MANIFOLD FIXED PLATE	1	1
11	RJC015P	26°-DRIP TRAY	1	
	RJC016P	32°-DRIP TRAY		1
12	RJC017P	90 DEGREE FITTING	1	1
13	RJC018P	REGULATOR	1	1
14	RJC019P	26°-MANIFOLD	1	
	RJC020P	32°-MANIFOLD		1
15	RJC021P	VALVE LATCH	3	5
16	RJC022P	MAIN VALVE	3	4
17	RJC023P	IR BURNER VALVE		1
18	RJC024P	IR BURNER FLEX TUBE		1
19	RJC025P	KNOB	3	5
20	RJC026P	KNOB BEZEL	3	5
21	RJC027P	LOGO PLATE	1	1
22	RJC028P	26°-CONTROL PANEL	1	
	RJC029P	32°-CONTROL PANEL		1
23	RJC030P	ROTISSERIE HANDLE (OPTIONAL)		1
24	RJC031P	SPIT COLLAR (OPTIONAL)		1
25	RJC032P	ROTISSERIE SPIT (OPTIONAL)		1
26	RJC033P	SKEWER FORK (OPTIONAL)		1
27	RJC034P	THUMB SCREW (OPTIONAL)		3
28	RJC035P	MOTOR BRACKET (OPTIONAL)		1
29	RJC036P	ROTISSERIE MOTOR (OPTIONAL)		1
30	RJC037P	IR BURNER IGNITION WITH WIRE		1
31	RJC038P	IR BURNER IGNITION HOUSE		1
32	RJC039P	IR BURNER ELBOW FITTING		1
33	RJC040P	IR BURNER JOINT NUT		1
34	RJC041P	IR BURNER ORIFICE		1
35	RJC042P	I.R BURNER		1
36	RJC043P	26°-HOOD HANDLE	1	
	RJC044P	32°-HOOD HANDLE		1
37	RJC045P	RUBBER STOPPER	2	2
38	RJC046P	TEMP GAUGE BEZEL	1	1
39	RJC047P	TEMP GAUGE	1	1