

# STAINLESS STEEL Drop-In Water Stations With Filler Faucets

Item #: \_\_\_\_\_ Qty #: \_\_\_\_\_

Model #: \_\_\_\_\_

Project #: \_\_\_\_\_



**DI-1-9**  
12" x 14"

### FEATURES:

Includes K-54 deck mount faucet with "Push-back" actuator.

**DI-1-9** features removable electro-polished stainless steel grill.

### D-24-WSIBL & D-24-WSIBL2:

12" deep insulated ice bin.

Removable grate covers drip pan.

Rubber thermal breaker to reduce condensation.

Supplied with stainless steel sliding cover.

### MECHANICAL:

1" IPS drain (drip pan and ice bin)

Filler faucet has a cold connection with 1/2" IPS

**Faucet meets federal lead free standards.**

### MATERIAL:

**Jacket:** 20 gauge galvanized steel

**Ice Bin:** 20 gauge, 300 stainless steel

**Cover:** 20 gauge stainless steel (D-24-WSIBL and D-24-WSIBL2 only)

**Molding:** Extruded black polyethylene thermal breaker marine edge

**Insulation:** 2lbs. density foam-in-place insulation

**K-54 Faucet:** Acrylic lever arm

### OPTIONAL:

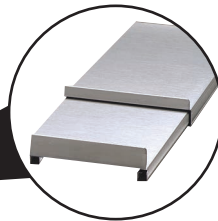
**D-12:** Replacement sliding stainless steel cover



**D-24-WSIBL**  
21" x 18"



**D-24-WSIBL2**  
18" x 21"



**Units With Ice Bins Are  
Supplied With A Sliding  
Stainless Steel Cover**

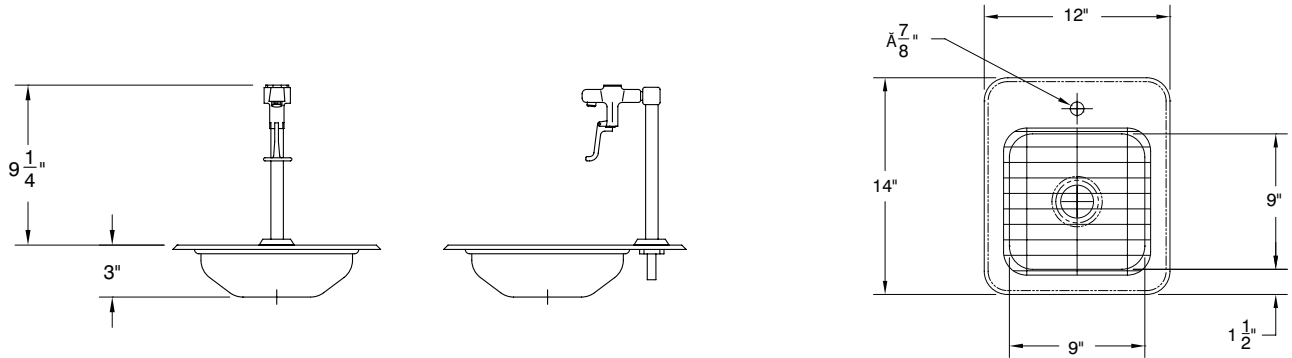
| Model #     | Description              | Outside Dimensions | Cut-Out Size      | Ice Capacity | Approx. Weight | Approx. Cu. Ft. |
|-------------|--------------------------|--------------------|-------------------|--------------|----------------|-----------------|
| DI-1-9      | Water Station            | 12" x 14"          | 11 1/4" x 13 1/4" | N/A          | 15 lbs.        | 3               |
| D-24-WSIBL  | Water Station w/ Ice Bin | 21" x 18"          | 20 5/8" x 15 1/4" | 23 lbs.      | 30 lbs.        | 5               |
| D-24-WSIBL2 | Water Station w/ Ice Bin | 18" x 21"          | 15 1/4" x 20 5/8" | 50 lbs.      | 47 lbs.        | 5               |

# DIMENSIONS and SPECIFICATIONS

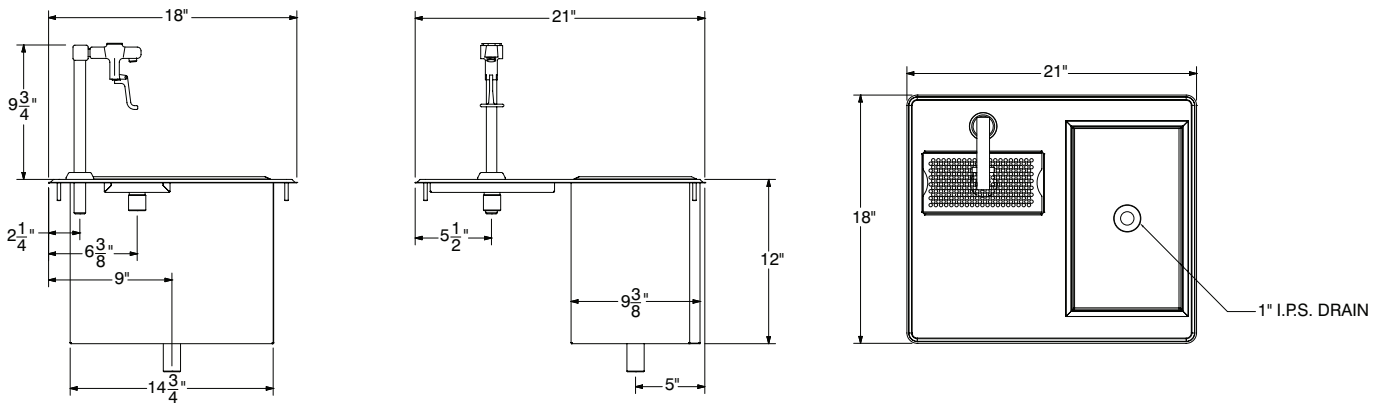
TOL Overall: ± .500" Interior: ± .250"

ALL DIMENSIONS ARE TYPICAL

## DI-1-9



## D-24-WSIBL



## D-24-WSIBL2

