



WATER CREATION

## TUB FAUCET INSTALLATION GUIDE

### BEFORE YOU BEGIN

- 1) Shut off water supply.
- 2) Carefully inspect waste and supply tubing for signs of damage.
- 3) Replace waste or supply tubing if necessary

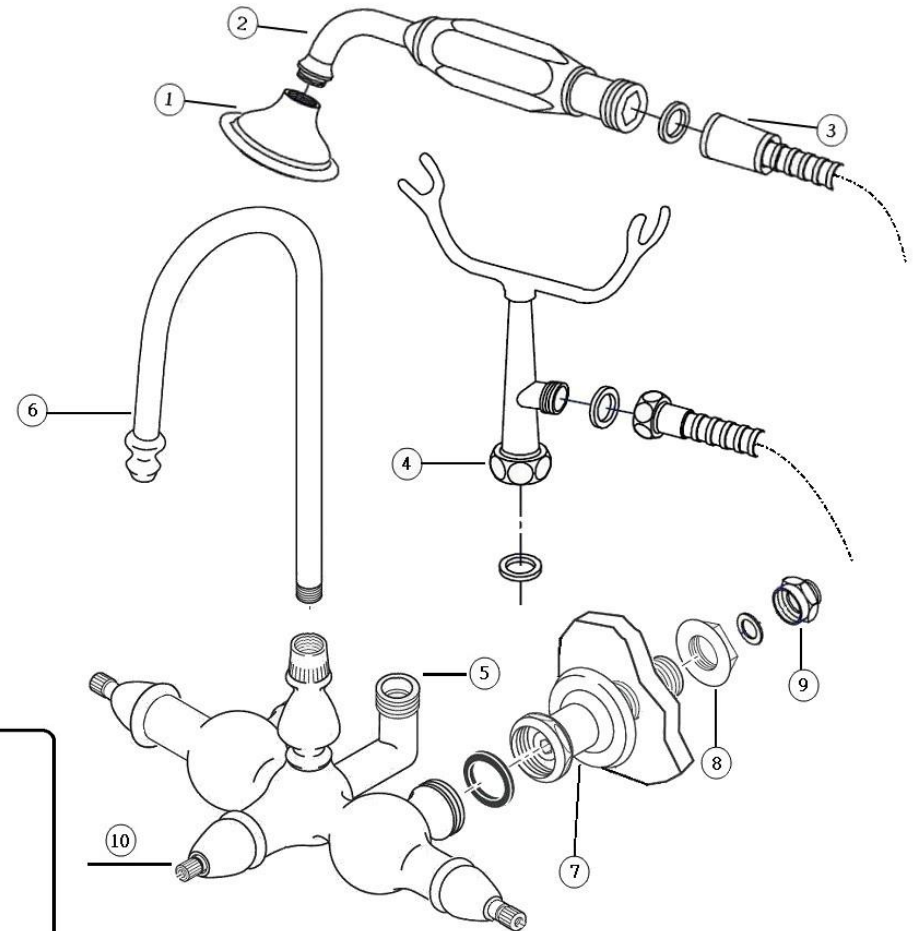
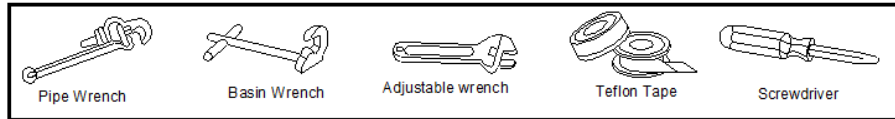
### INSTRUCTIONS

- 1) Attach the rubber washer into wall coupler nut (7), connect it with faucet body.
- 2) Apply tape to the gooseneck spout thread (6) and screw into faucet body.
- 3) Attach the rubber washer into cradle nut (4), connect it with faucet body elbow (5).
- 4) To set the faucet onto tub and shanks go through the tub wall holes.
- 5) Install the lock nut (8) then tighten with wrench.
- 6) Assemble the hand shower (1) (2) and hose (3) with rubber washer, then to connect with cradle
- 7) If necessary, to assemble the 3/4" to 1/2" adapter (9) with rubber washer.
- 8) Set the handles (10) on faucet body with screws.
- 9) Connect the water supply lines to wall coupler shank/adaptor.
- 10) Turn on main water supply and check all connections for leaking.

### COMPLETE INSTALLATION

Note: All nuts connections, hand tighten first then quarter turn tighten by wrench. Don't over tighten the nut.

### TOOLS AND MATERIALS



Metal Lever



Porcelain Lever

