

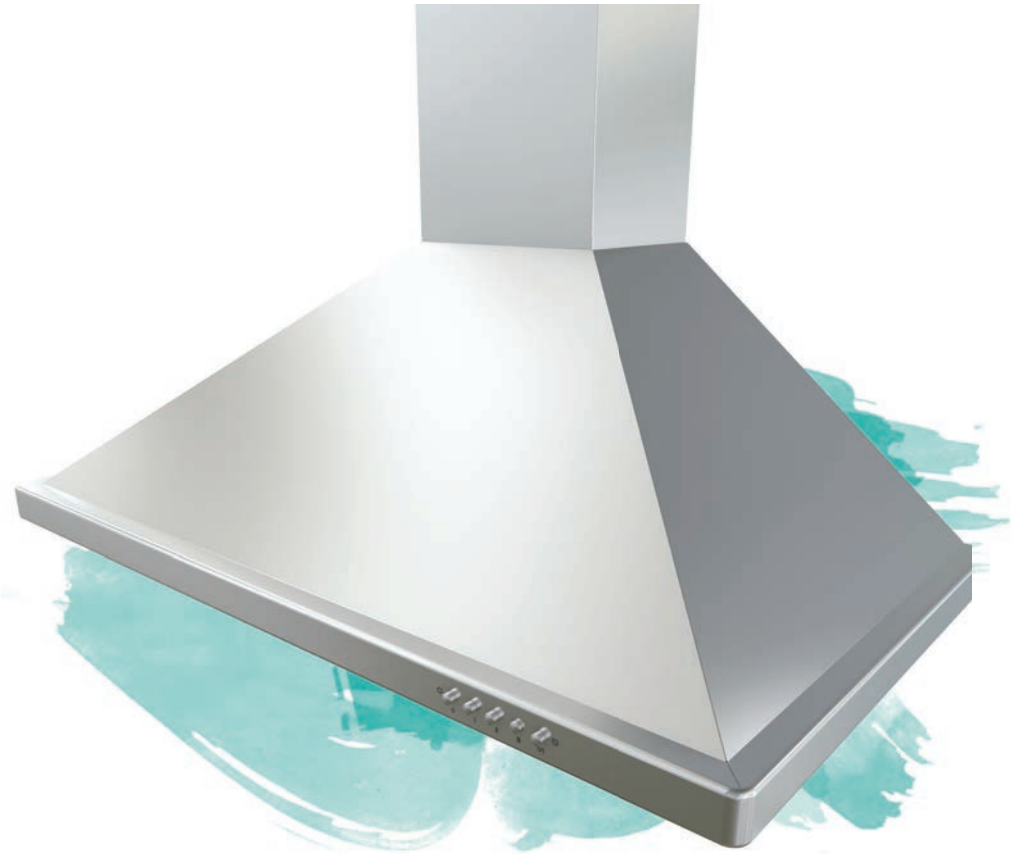
*Get noticed!*

## Brisas BVE

The Brisas BVE wall-mounted range hood makes quite an impression. From its pro-style pyramid design to its 600 CFM internally installed motor, BVE is head and shoulders above the competition. Relying on the highest quality manufacturing standards, BVE exudes strength that lasts and quality that is easy to relate to: easy-to-install out-of-the-box design, high-grade stainless steel, tight seams and precision metal folding for seamless corners and edges.

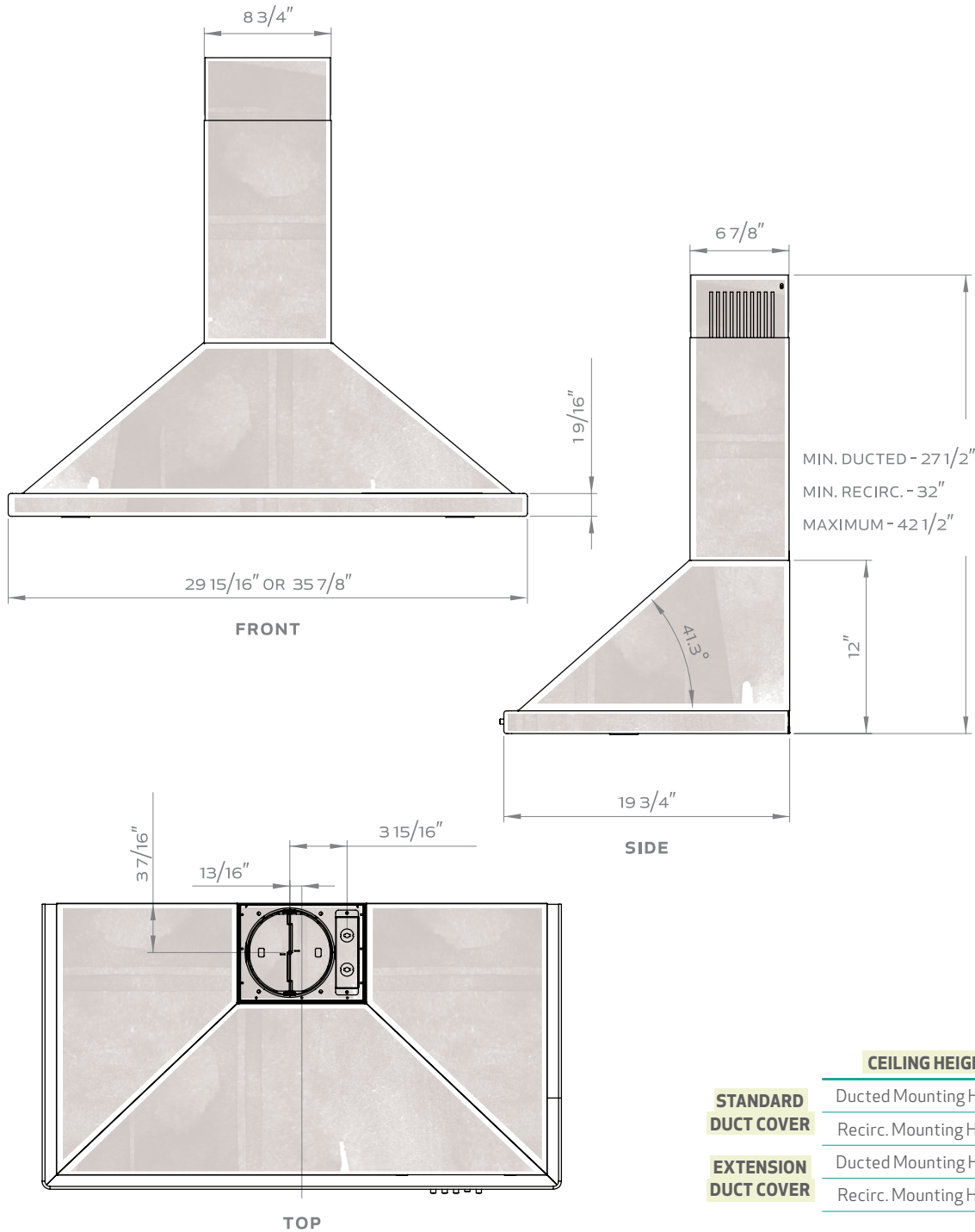
### FEATURES OF HIGH QUALITY

- Available in 30" and 36"
- Available with 600-cfm or 290-cfm internally installed motor
- Reliable 3-speed mechanical controls
- Sturdy stainless steel construction
- Durable, washable 5-ply aluminum mesh filters
- Optional recirculation kit
- Standard telescopic duct covers up to 9' ceilings
- Optional duct cover extensions for up to 12' ceilings
- Designed for 6-inch vertical ducted installations



  
brisas

# Brisas BVE



|                              | BVE-E30AS / BVE-E30AS290 | BVE-E36AS / BVE-E36AS290 |
|------------------------------|--------------------------|--------------------------|
| <b>SIZE</b>                  | 30"                      | 36"                      |
| <b>NET WIDTH</b>             | 29-15/16"                | 35-7/8"                  |
| <b>PERFORMANCE</b>           |                          |                          |
| Blower CFM, Max.             | 600 / 290                | 600 / 290                |
| Sones, Max.                  | 6 / 2.8                  | 6 / 2.8                  |
| <b>COLOR</b>                 |                          |                          |
| Stainless Steel              | SS                       | SS                       |
| <b>FEATURES</b>              |                          |                          |
| Controls                     | Mechanical Push Button   | Mechanical Push Button   |
| Speed Levels                 | 3                        | 3                        |
| Delay Off                    | No                       | No                       |
| Lighting                     | Halogen, 50W x2          | Halogen, 50W x2          |
| Dual Level Lighting          | No                       | No                       |
| Filters                      | Stainless Steel Mesh     | Stainless Steel Mesh     |
| Recirculating Option         | Yes                      | Yes                      |
| Extension Duct Cover Option  | Yes, Up to 12' Ceiling   | Yes, Up to 12' Ceiling   |
| <b>DUCT SPECIFICATIONS</b>   |                          |                          |
| Internal Blower - Vertical   | 6" round                 | 6" round                 |
| Internal Blower - Horizontal | NA                       | NA                       |
| <b>AC INPUT</b>              |                          |                          |
|                              | 120V - 60Hz              | 120V - 60Hz              |
| <b>AC POWER</b>              |                          |                          |
|                              | 400W, 3.5A / 170W, 1.5A  | 400W, 3.5A / 170W, 1.5A  |
| <b>OPTIONAL ACCESSORIES</b>  |                          |                          |
| Recirculating Kit            | BRC-0001                 | BRC-0001                 |
| Extension Duct Cover         | B1C-00VE                 | B1C-00VE                 |
| <b>MOUNTING HEIGHT*</b>      |                          |                          |
|                              | 26" - 34"                | 26" - 34"                |

|                             | CEILING HEIGHT           | 8'        | 8.5'    | 9'        | 9.5'      | 10'     | 10.5'   | 11'     | 12'     |
|-----------------------------|--------------------------|-----------|---------|-----------|-----------|---------|---------|---------|---------|
| <b>STANDARD DUCT COVER</b>  | Ducted Mounting Height*  | 26"-32.5" | 26"-34" | 29.5"-34" | N/A       | N/A     | N/A     | N/A     | N/A     |
|                             | Recirc. Mounting Height* | 26"-28"   | 26"-34" | 29.5"-34" | N/A       | N/A     | N/A     | N/A     | N/A     |
| <b>EXTENSION DUCT COVER</b> | Ducted Mounting Height*  | N/A       | N/A     | 26"-26.5" | 26"-32.5" | 26"-34" | 26"-34" | 26"-34" | 28"-34" |
|                             | Recirc. Mounting Height* | N/A       | N/A     | N/A       | 26"-28.5" | 26"-34" | 26"-34" | 26"-34" | 28"-34" |

\*Mounting height refers to distance between top of a 36" tall cooking surface and bottom of hood.